



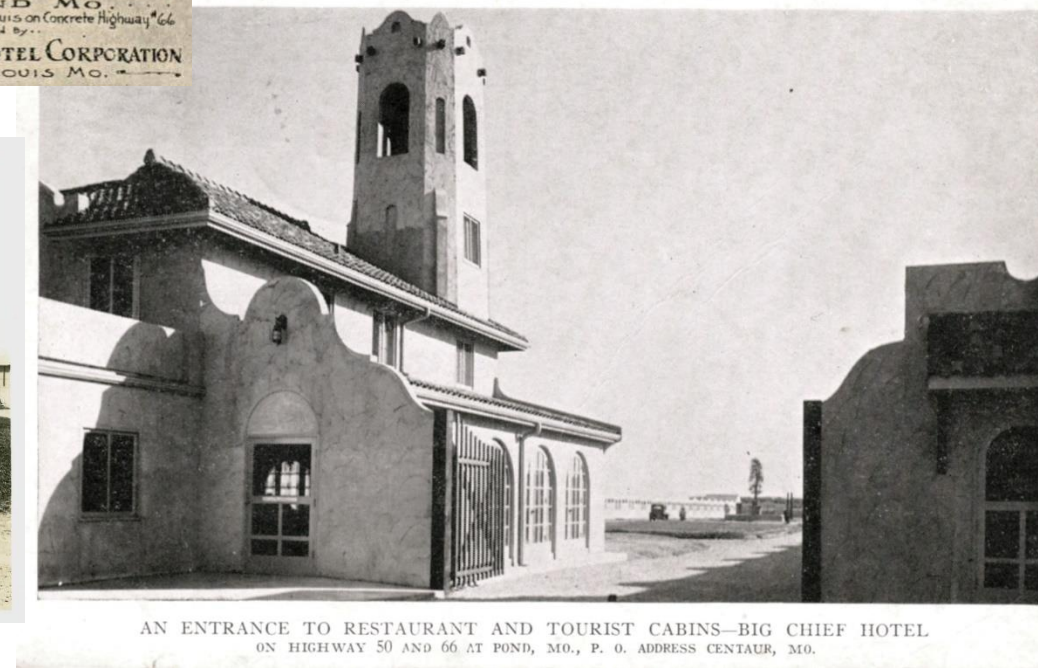
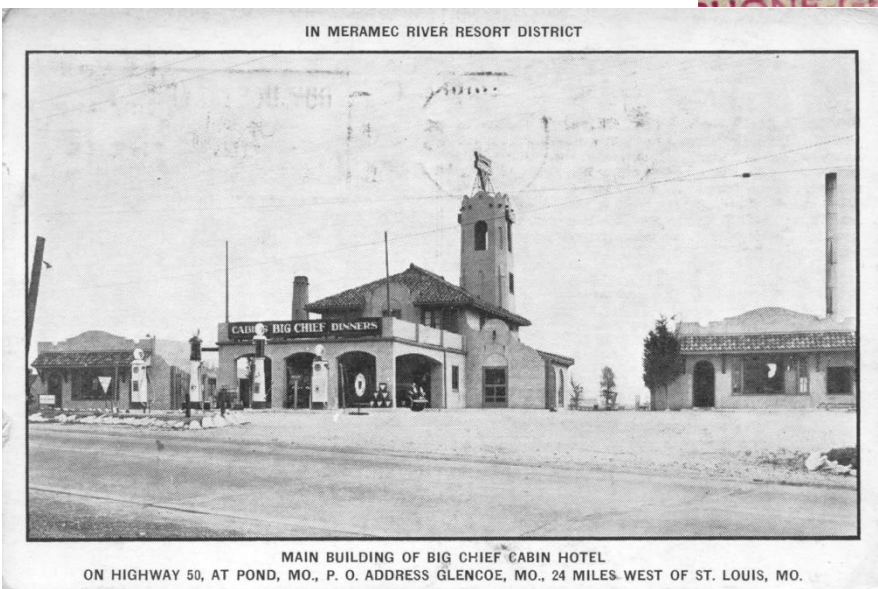
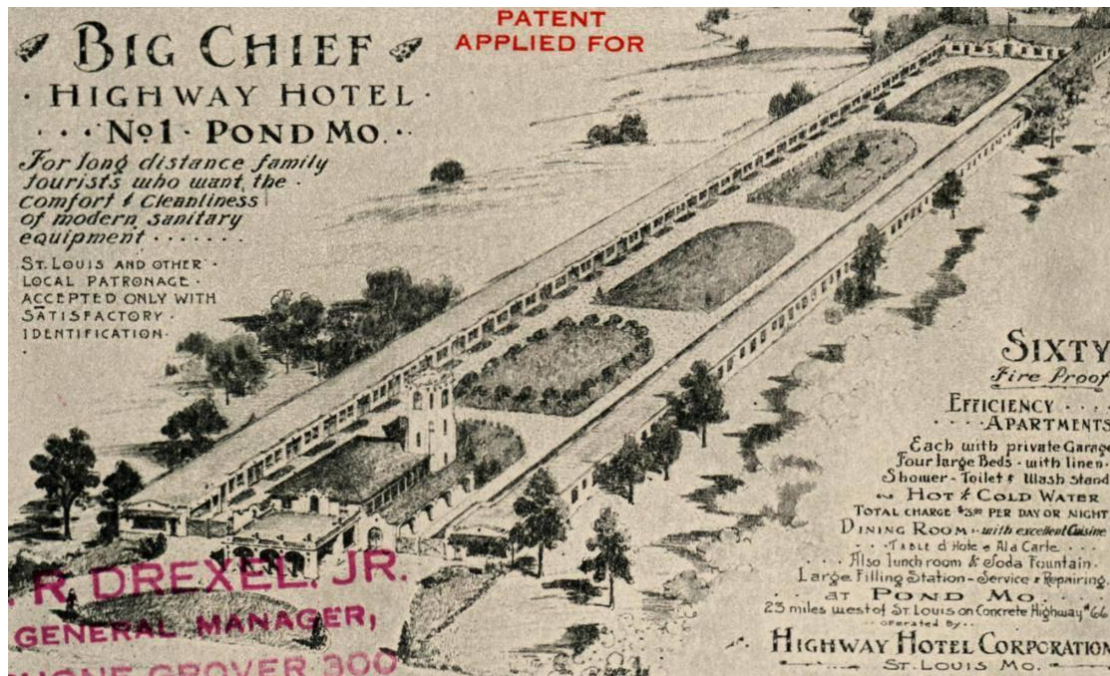
Historic Big Chief

RESTAURANT | TAVERN | GARDEN

ESTABLISHED 1929

Celebrating 85 Years

Just 2 Miles West on Manchester Road



Big Chief Roadhouse has a celebrated history dating back to 1929. Located near Pond, Missouri, Big Chief Roadhouse was originally built by William Clay Pierce, of the Pierce-Pennant Oil Company, as part of the Big Chief Highway Hotel to serve transcontinental travelers on the now famed Route 66. According to local historians and tourist guides from the period, Big Chief was one of the largest tourist cottage courts in Missouri.

Big Chief differed from average cottage courts of the time in that it offered relatively elaborate and elegant dining. The uniqueness is rumored to have attracted star baseball legend, Babe Ruth, as well as infamous gangster, Al Capone.

Over the years, Big Chief has gone through many transformations. After Route 66 was diverted to follow the path of what is now Interstate 44, Big Chief lost most of its visitors and eventually closed. In 1946 the restaurant became "Mike Aceto's Café 66." The bell tower was taken down in 1959 and the cabins were demolished due to disrepair in the 1970's. Since then, Big Chief was revived as a re-sale shop, landscaping company, and once again a restaurant.

Re-opening as a restaurant in the mid 1990's, Big Chief has for the past 20 years or so, remained a dining destination. The cabins are gone, but it is one of the last remaining full-service restaurants on the famed roadway.

Today, the restaurant boasts a diverse, from scratch, menu with dishes ranging from classic comforts like the country fried steak and chicken pot pie, to modern takes on classics like the toasted lasagna and smoked pork chop.

(Taken from the Historic Big Chief Roadhouse website: bigchiefstl.com (2020))